

STOP, TAIL, INDICATOR WITH INTEGRATED SCENE LAMP



MODEL 785

STOP, TAIL, INDICATOR WITH INTEGRATED SCENE LAMP

Main Features

- Stop / Tail / Indicator
- Downward facing work lamp (800 lumens)
- Features standard static-flash DI or programmable progressive DI mode.



5 YEAR WARRANTY



LED



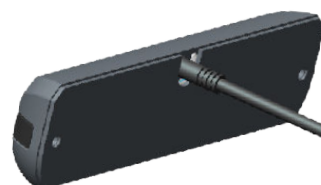
OMNI-VOLT



IP69K

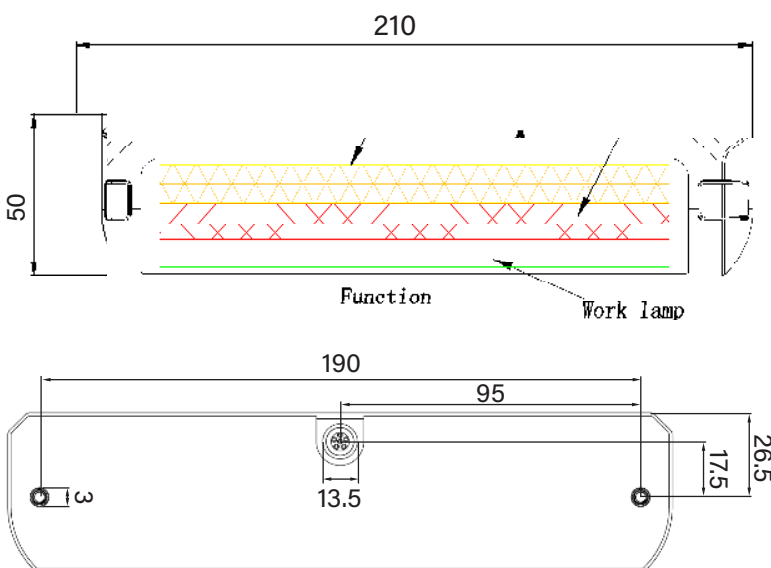


ADR APPROVED



The Model 785 rear lamp - a space-saving, efficient rear lighting solution. ECE approved for stop, tail, and indicator functions, featuring an integrated downward facing scene lamp. Includes standard static-flash DI or programmable progressive DI mode.

Mount them above your vehicle's rear loading hatch for enhanced safety and high-quality work area illumination.



Model No.	785
Light Source	LED
Voltage	12-24V
Dimensions	L 210mm x H 50mm x D 20mm
Housing	Polycarbonate
Lens	Polycarbonate
Mount/Fixings	Stainless Steel ST4.2*30 (2PCS)
Connector	Superseal or Bare End Cable
Functions	Stop / Tail / Indicator / Flood Beam
Warranty	5 years
Approvals	ECE R10, ECE R148, ADR
Testing	IP69K
Application	High mount rear van/trailer
Power	Stop-2.9W-3.3W DI-2.1W-3W Tail-0.4W-0.6W WK-10.1W- 13.5W

Part Numbers

785/03/01 - ADR CABLE WITH 6 WAY SUPER SEAL CONNECTOR

785/03/00 - WITH BARE END ADR CABLE



Truck-Lite Europe Ltd. | orders@truck-lite.eu.com | +44 (0)1279 406406 | truck-lite.eu.com